

DESCALING INSTRUCTION

INSTRUCTIONS DE DETARTRAGE

ES 100



NESPRESSO[®]
P R O F E S S I O N A L

de

it

pt

en

fr

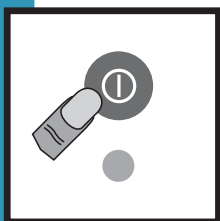
1

Descaling warning Alarme détartrage

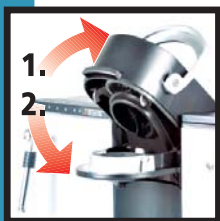
Never use vinegar!
Ne jamais utiliser du vinaigre!



All green lamps are flashing
Toutes les lampes vertes clignotent



Machine OFF
Appareil éteint



Eject capsule
Ejecter la capsule

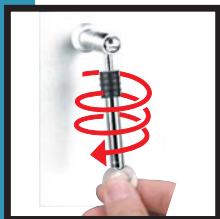
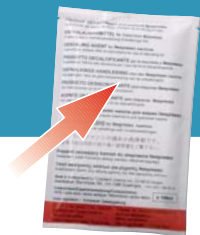


Empty drip tray
Vider le bac d'égouttage

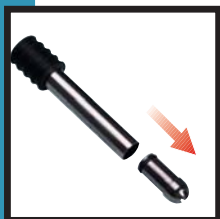
2 Preparation Préparation



Study protective measures on the package!
Veuillez lire les consignes de sécurité
indiquées sur l'emballage!



Unscrew nozzle
Dévisser la buse



Dismantle + clean nozzle
Démonter + nettoyer la buse



0.1 l descaling agent +
0.9 l water
0.1 l détartrant +
0.9 l d'eau



Place a recipient under coffee outlet
Positionner un récipient sous
la sortie café

3

Descaling Détartrer



Don't open handle or use steam function while descaling.
Ne pas ouvrir la mâchoire et ne pas utiliser la fonction vapeur
durant le détartrage.

START:



Simultaneously
Ensemble



3 cycles «coffee system»
3 cycles «système café»



Lamps
Lampes

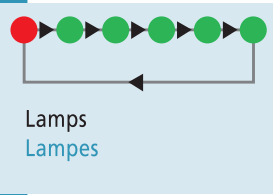


Hot water ON
Eau chaude ON



2 cycles «hot water system»
2 cycles «système eau chaude»

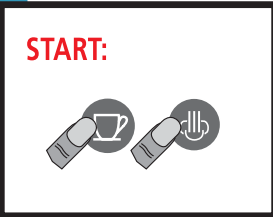
4 Rinse Rinçage



Lamps
Lampes



Empty the tanks, rinse and fill water tank completely
Vider les bacs, et remplir complètement le bac à eau



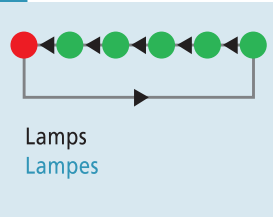
START:



Simultaneously
Ensemble



Hot water rinse
Rinçage eau chaude



Lamps
Lampes



Hot water OFF
Eau chaude OFF



Coffee rinse
Rinçage café

Wait till machine switches off
Attendre que la machine
s'arrête d'elle-même.

5

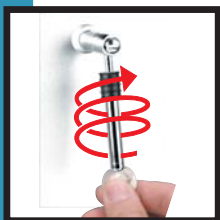
Finish Finir

Clean the machine to avoid any residual descaling agent.

Nettoyer la machine pour enlever les résidus de détartrant.



Re-assemble nozzle
Remonter la buse



Screw nozzle back on
Revisser la buse

160404